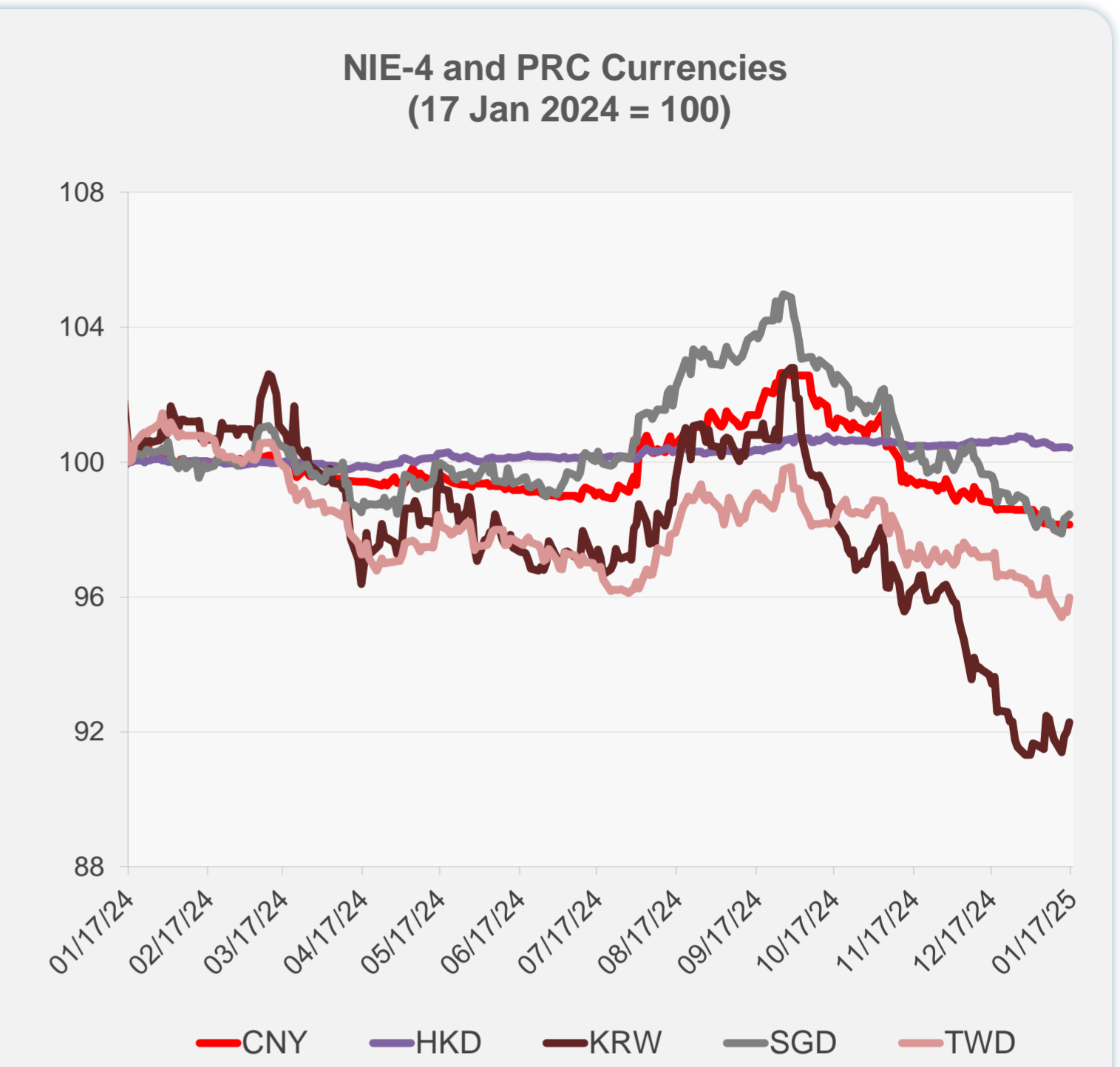
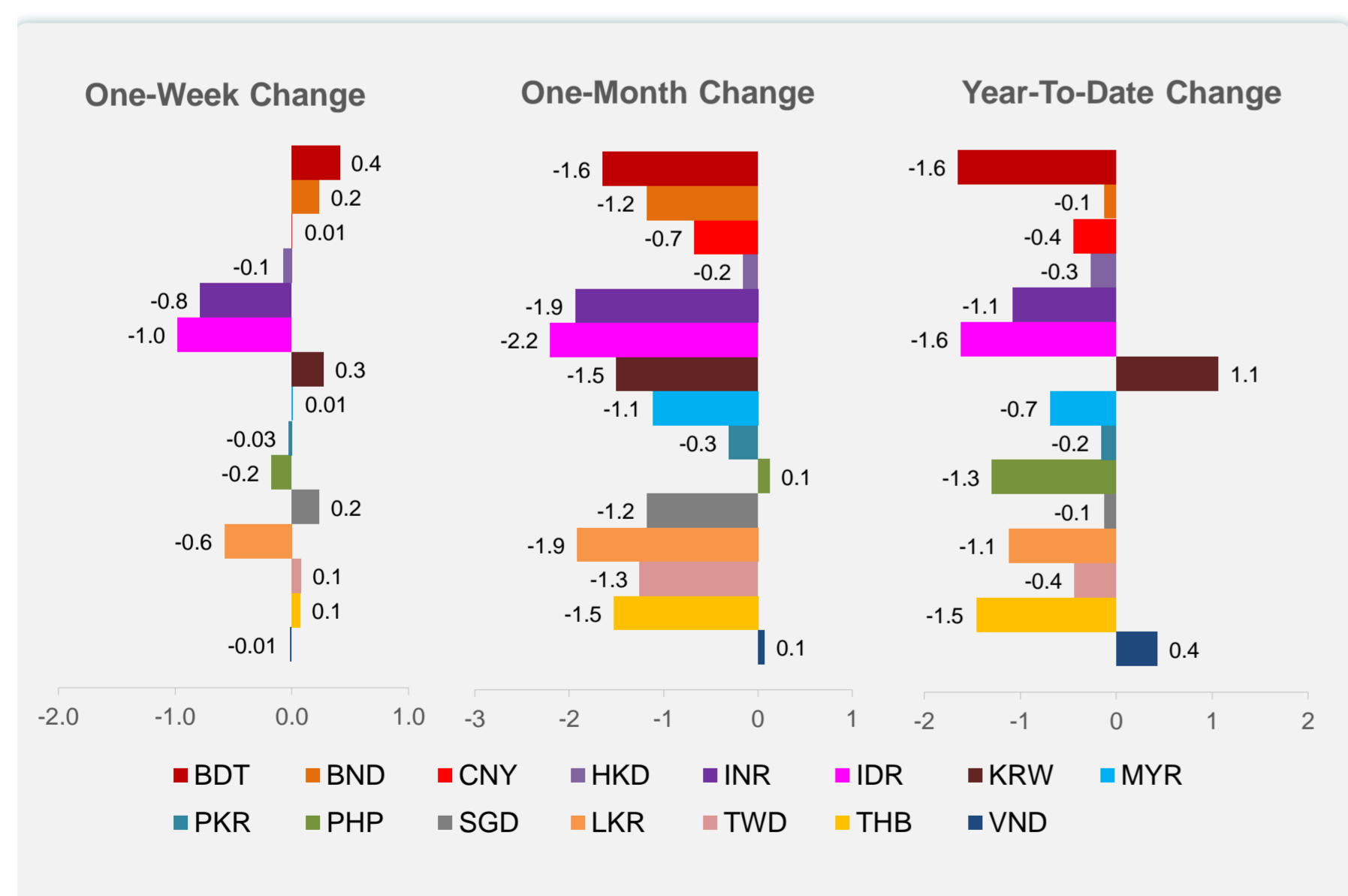
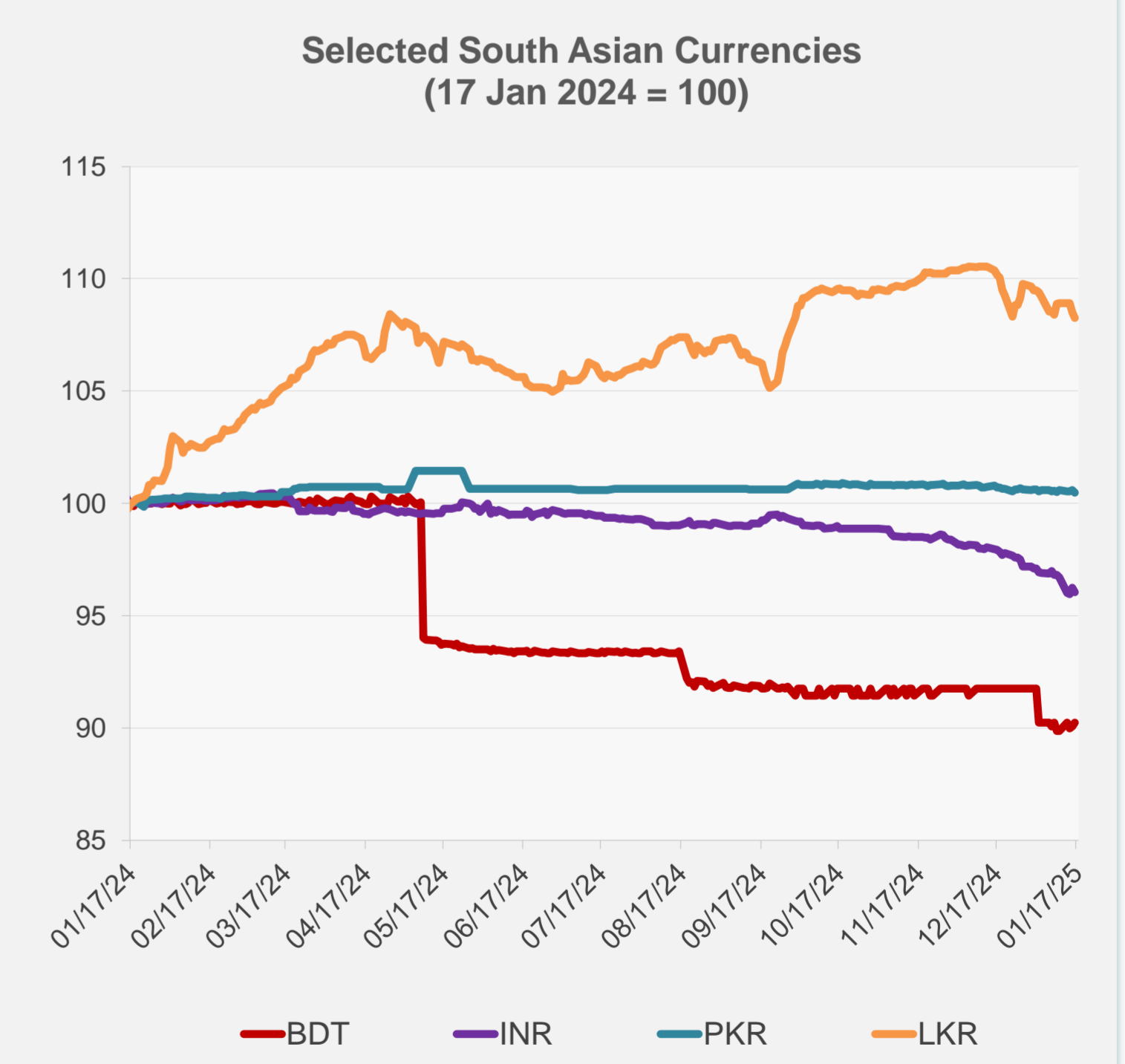
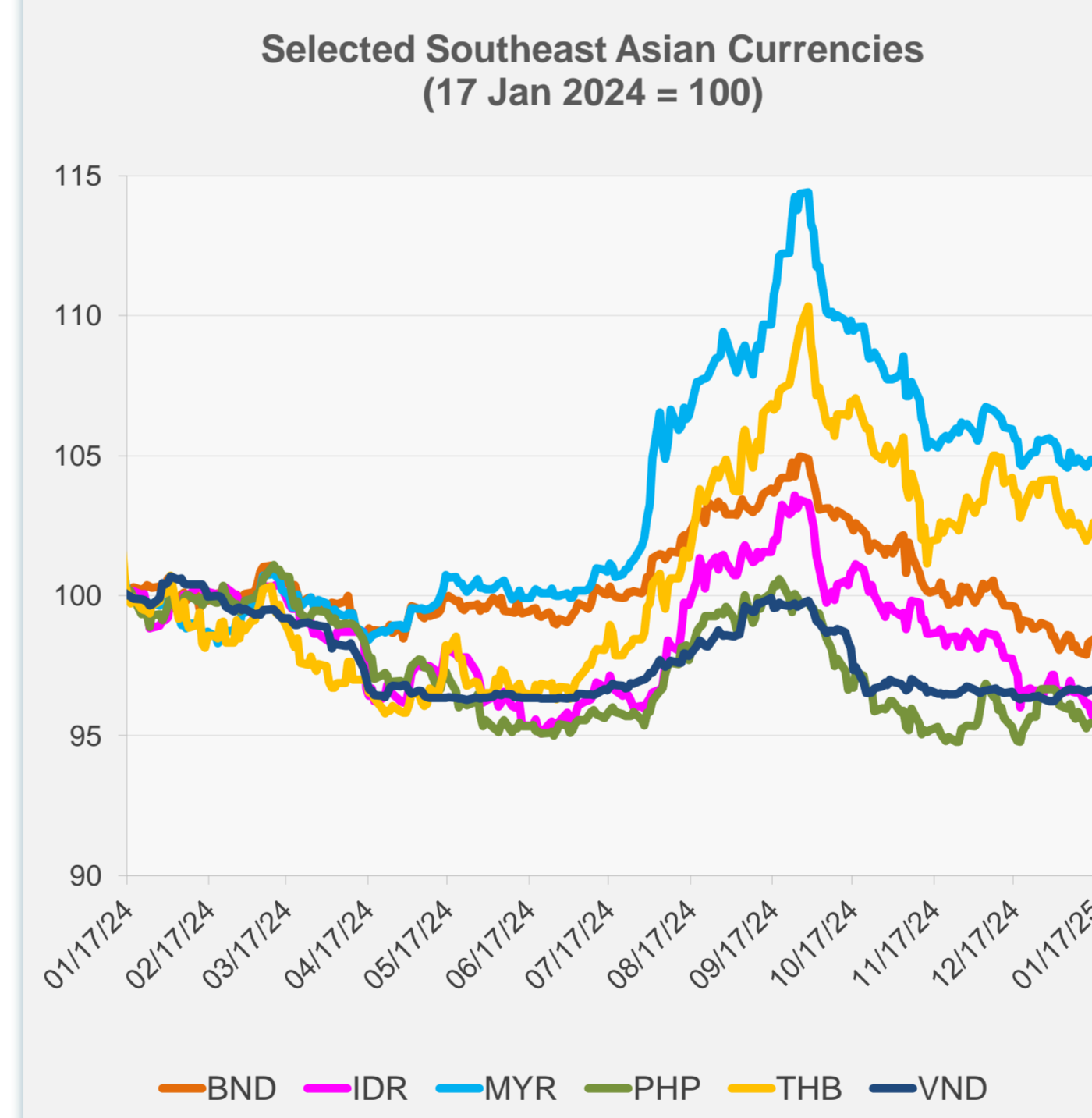


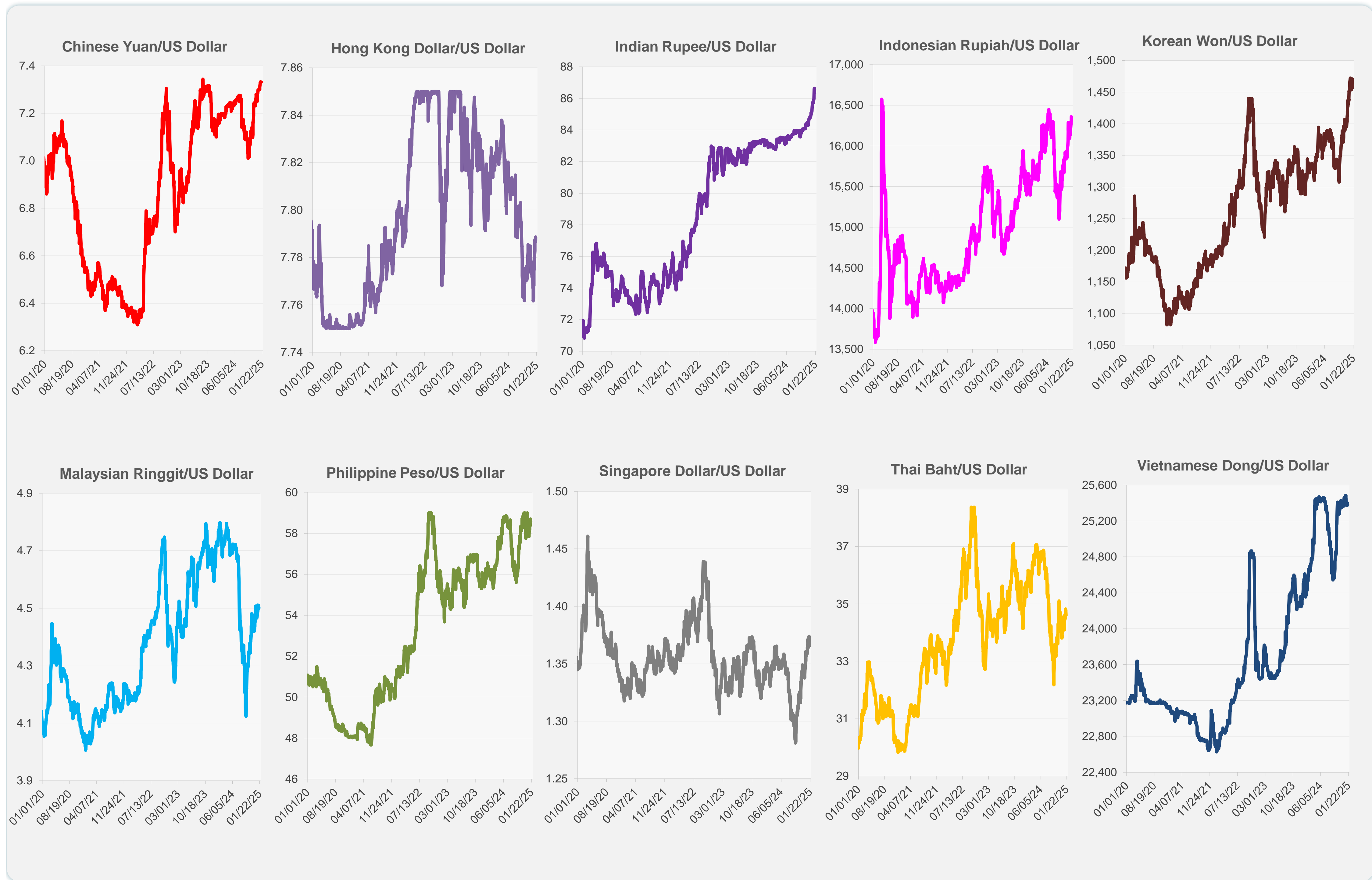
	Latest Closing	% change from Previous Day	% change from 01-Jan-25
Euro	0.97	-0.04	-0.53
Japanese yen (JPY)	155.44	0.57	1.11
Bangladeshi taka (BDT)	121.50	0.21	-1.65
Brunei dollar (BND)	1.37	0.07	-0.12
Chinese yuan (CNY)	7.33	0.00	-0.44
Hong Kong dollar (HKD)	7.79	-0.02	-0.26
Indian rupee (INR)	86.55	-0.21	-1.08
Indonesian rupiah (IDR)	16,360.00	-0.24	-1.62
Korean won (KRW)	1,456.70	0.30	1.06
Malaysian ringgit (MYR)	4.50	-0.08	-0.69
Pakistan rupee (PKR)	278.80	-0.12	-0.15
Philippine peso (PHP)	58.60	-0.03	-1.29
Singapore dollar (SGD)	1.37	0.07	-0.12
Sri Lanka rupee (LKR)	296.30	-0.23	-1.12
Taipei,China NT dollar (TWD)	32.93	0.45	-0.43
Thai baht (THB)	34.60	0.38	-1.46
Vietnamese dong (VND)	25,377.50	0.03	0.42



NIE = Newly Industrialized Economies



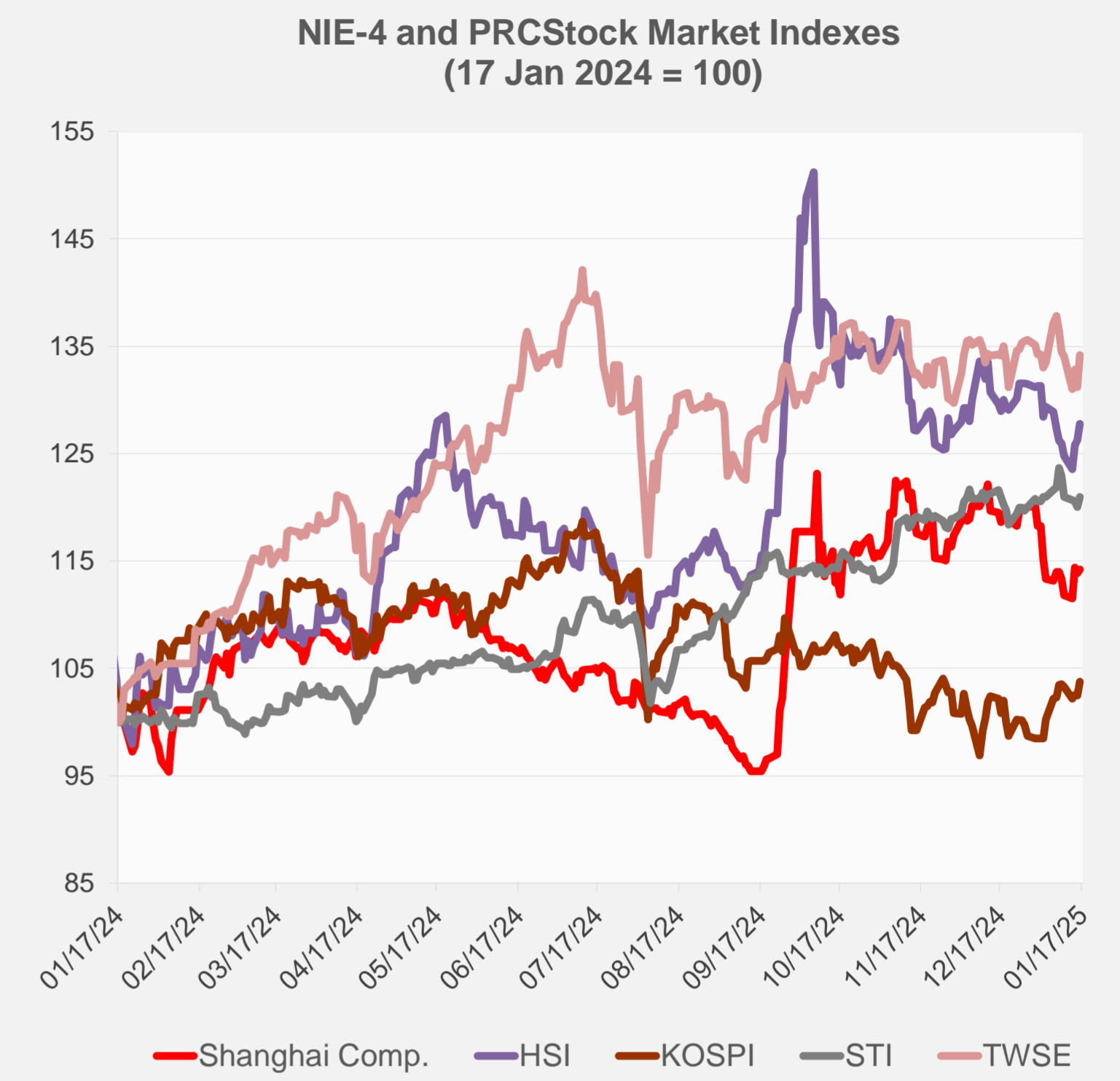
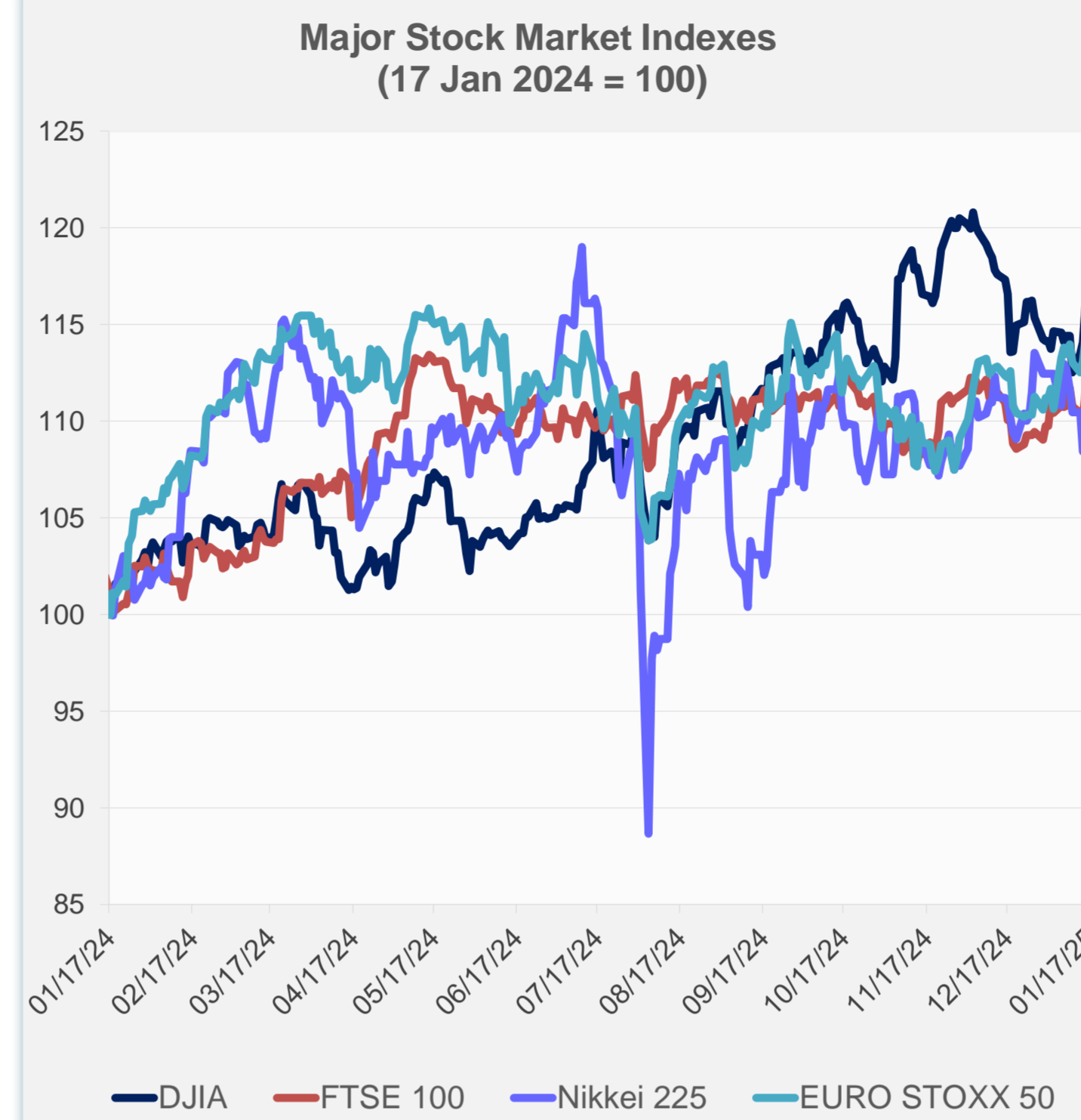
Note: Negative/Decreasing values indicate depreciation of local currency, and positive/increasing values indicate appreciation.
Source: ADB calculations using data from Haver Analytics.



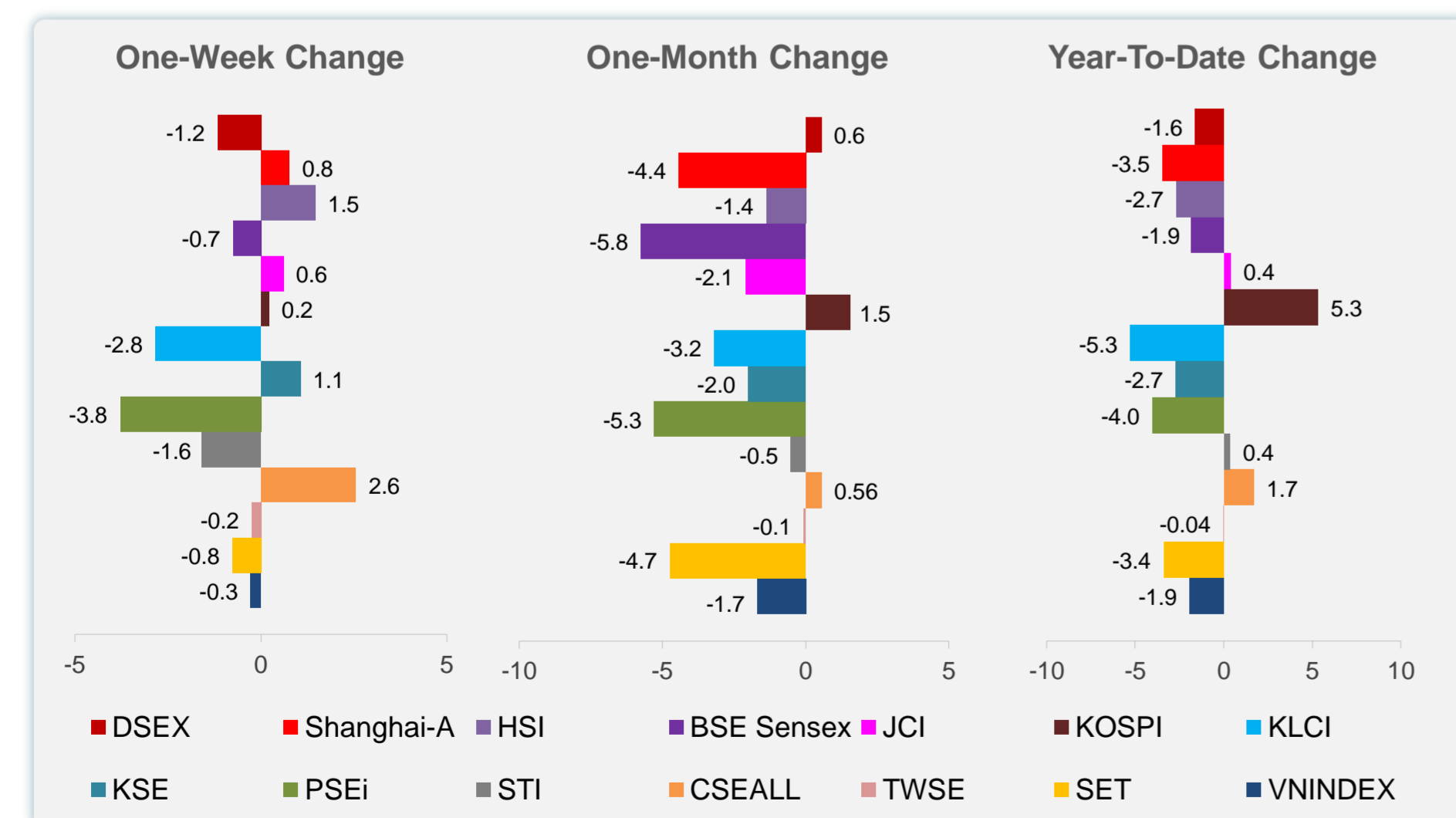
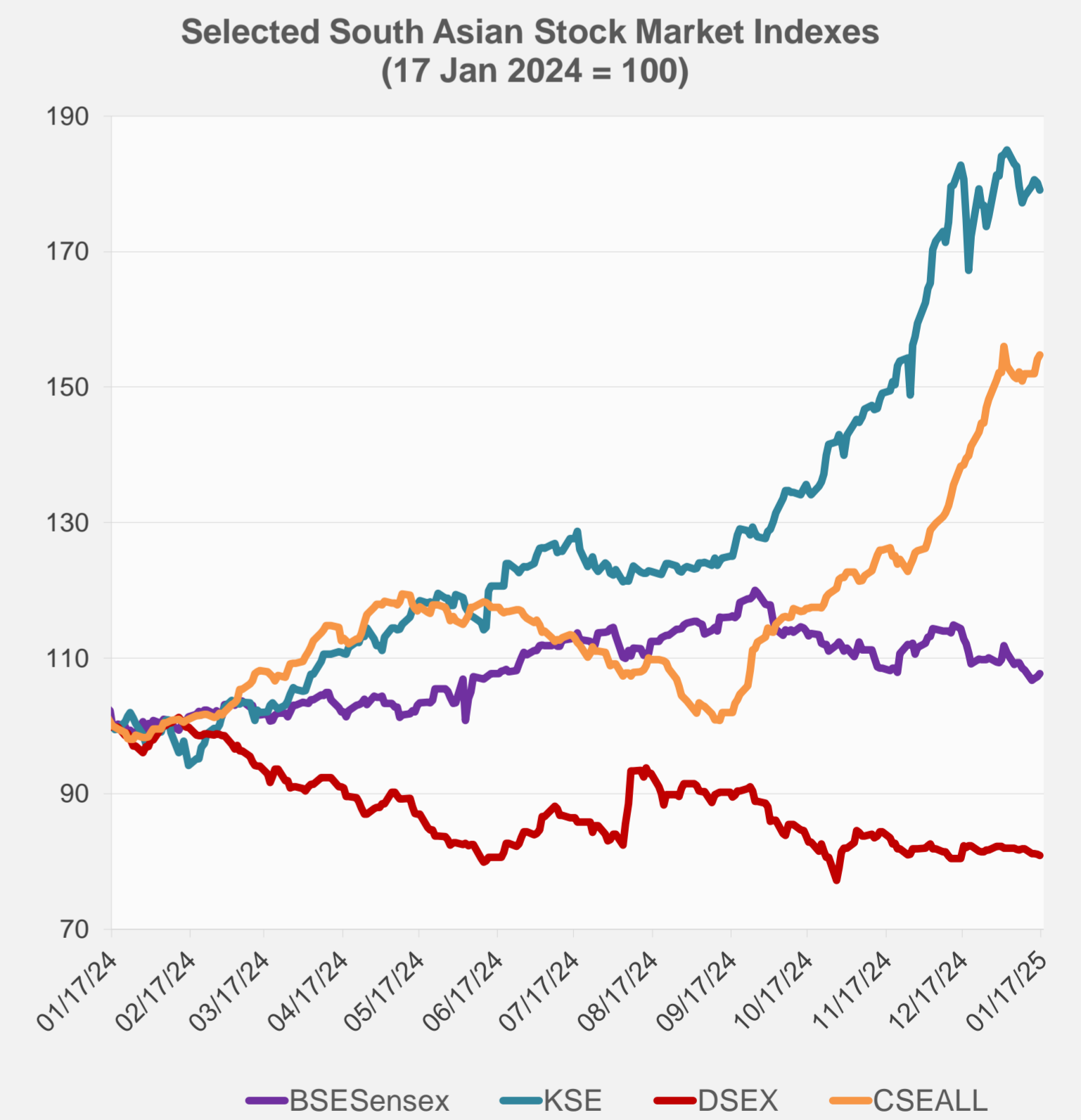
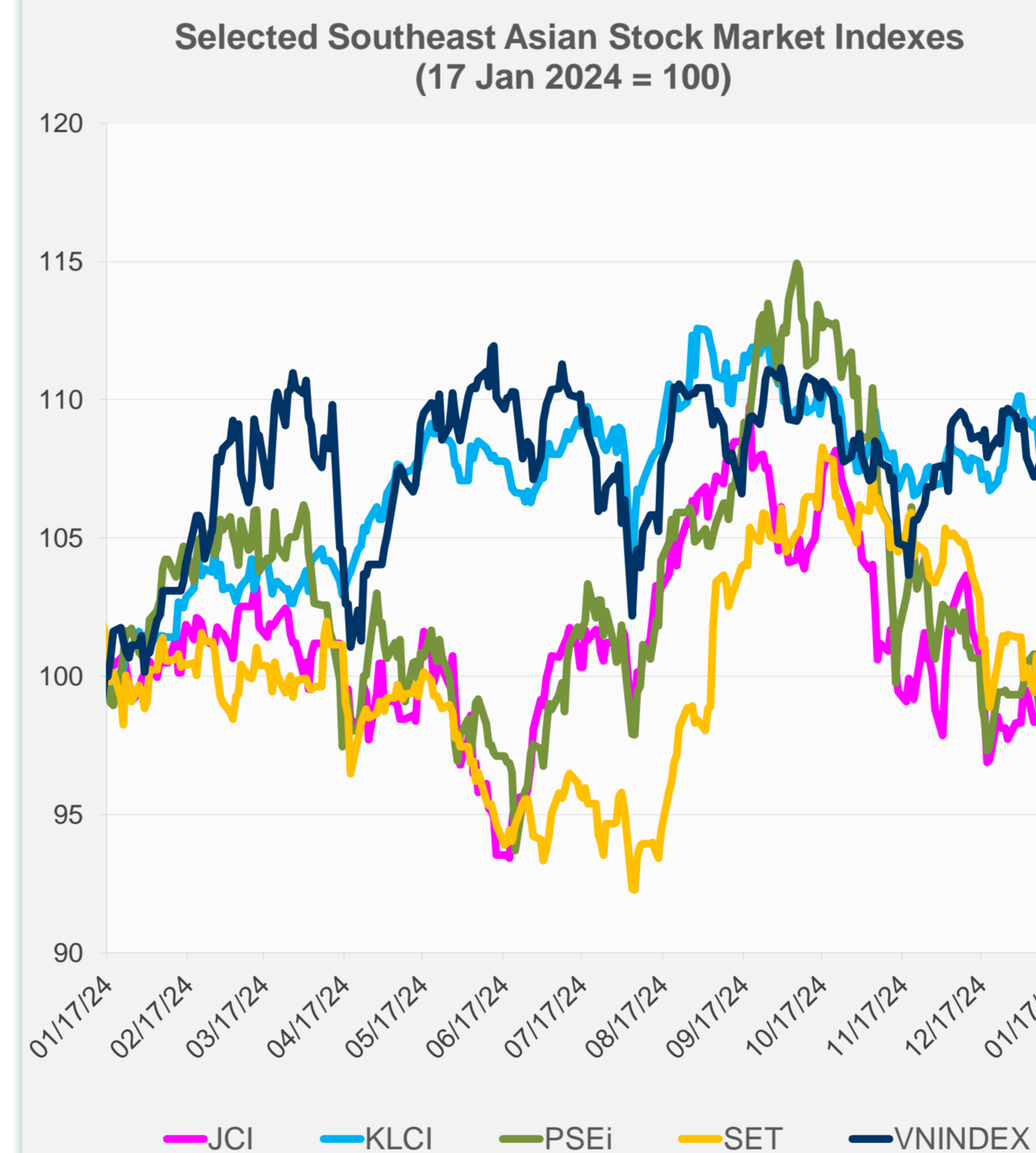
Source: Haver Analytics.

Daily Market Watch
STOCK INDEXES

	Latest Closing	% change from Previous Day	% change from 01-Jan-25
US Dow Jones Ind Avg	43,153.13	-0.16	1.43
US NASDAQ	19,338.29	-0.89	0.14
US S&P 500	5,937.34	-0.21	0.95
UK FTSE 100	8,391.90	1.09	2.68
EURO STOXX 50	5,106.93	1.48	4.31
Japan NIKKEI 225	38,572.60	0.33	-3.31
Bangladesh DSEX	5,133.92	-0.17	-1.61
PRC Shanghai Comp.	3,236.03	0.28	-3.45
Hong Kong, China HSI	19,522.89	1.23	-2.68
India BSE Sensex	77,042.82	0.42	-1.87
Indonesia JCI	7,107.52	0.39	0.39
Korea, Rep. of KOSPI	2,527.49	1.23	5.33
Malaysia KLCI	1,555.54	-0.42	-5.28
Pakistan KSE 100	113,836.74	-0.58	-2.71
Philippines PSEi	6,265.52	-1.03	-4.03
Singapore STI	3,801.13	0.76	0.36
Sri Lanka CSEALL	16,215.93	0.39	1.70
Taipei, China TWSE	23,025.10	2.27	-0.04
Thailand SET	1,352.56	-0.05	-3.40
Viet Nam VNINDEX	1,242.36	0.50	-1.93



NIE = Newly Industrialized Economies



Sources: ADB calculations using data from CEIC Data Company and Haver Analytics.



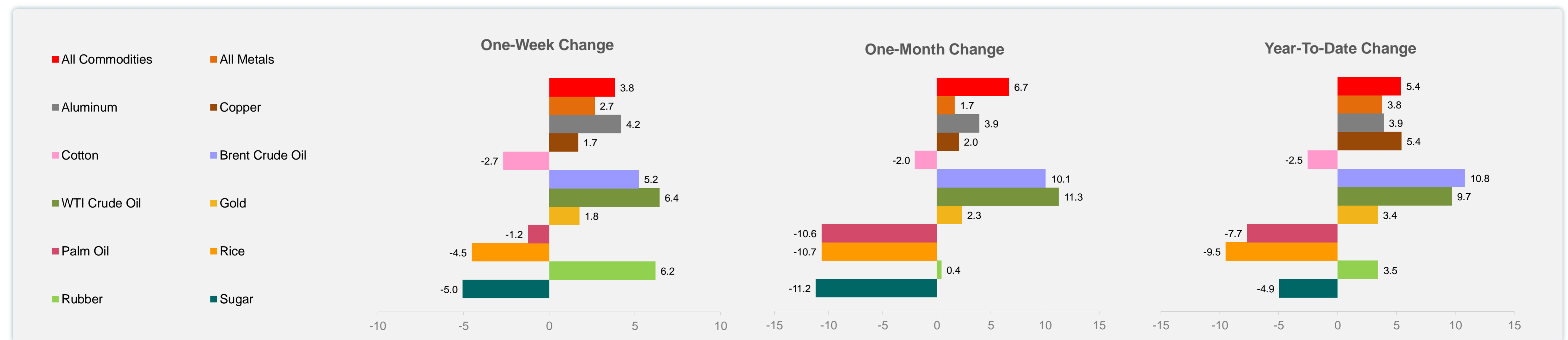
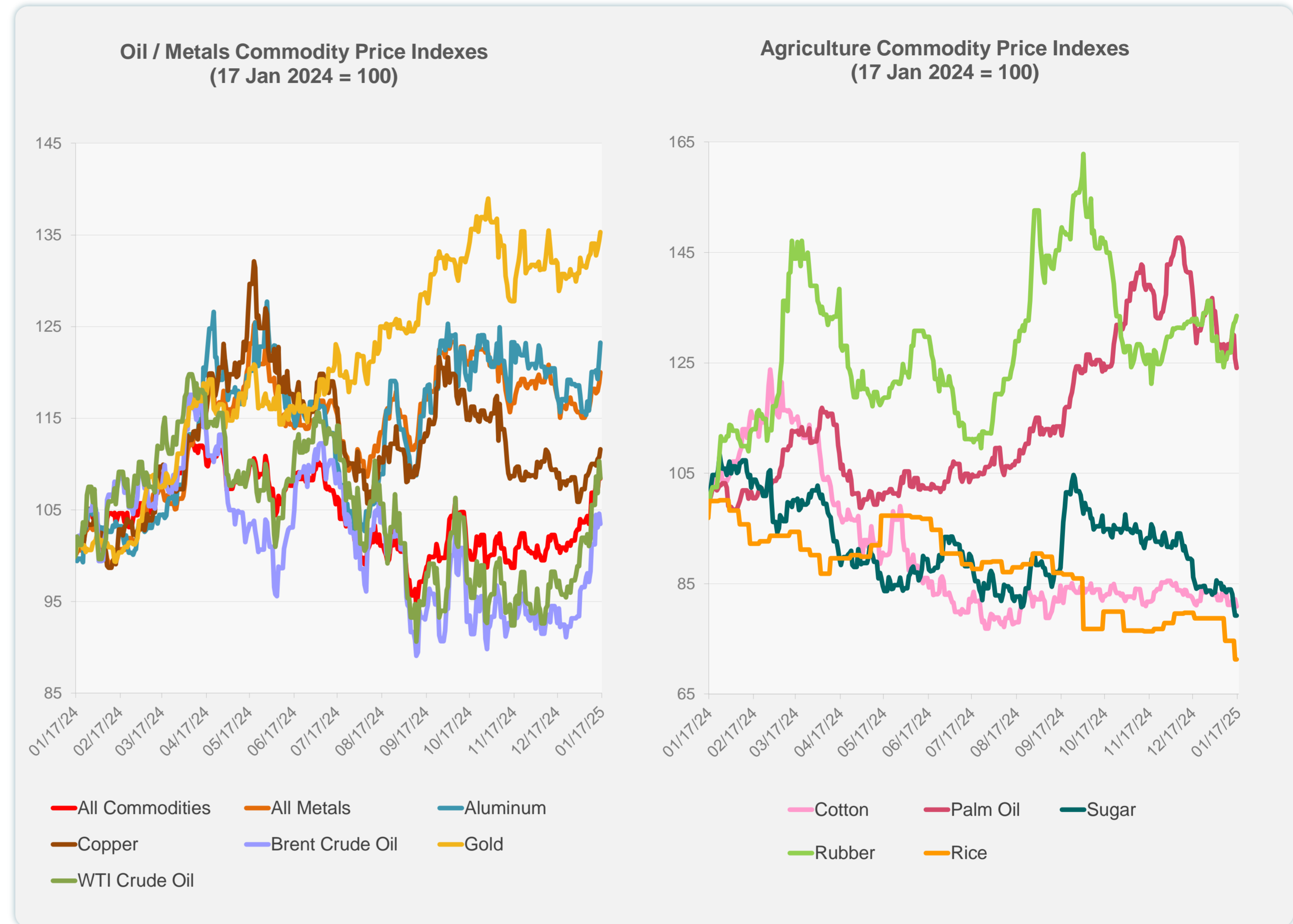
Sources: CEIC Data Company and Haver Analytics.

Daily Market Watch
COMMODITY PRICES

17 January 2025, 9:00 AM Manila

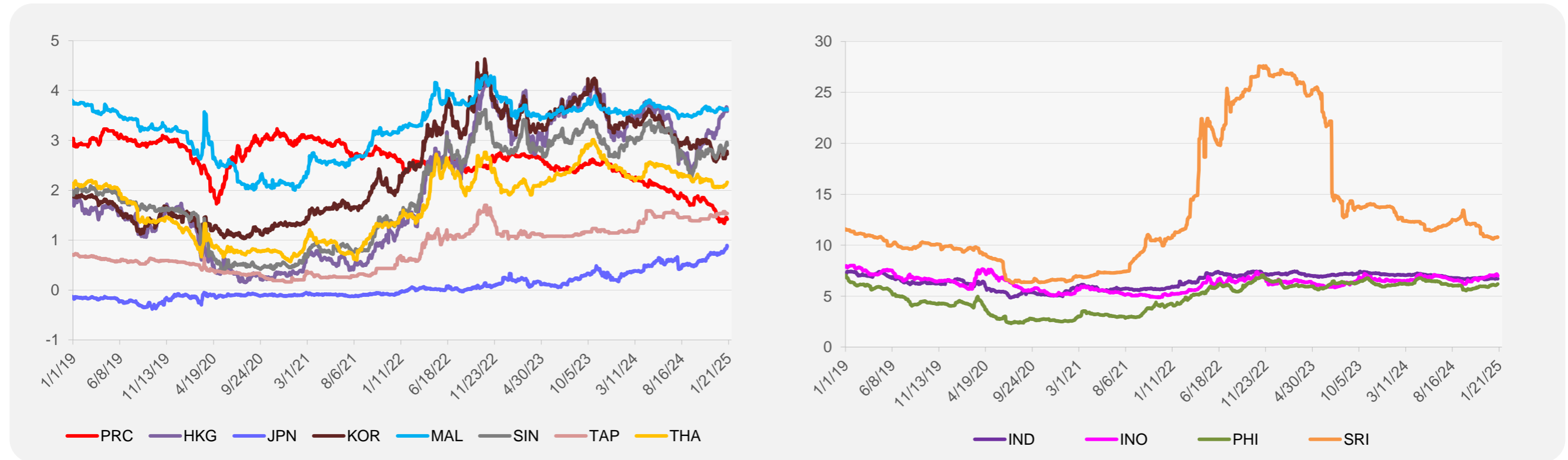
	Unit	Latest Closing	% change from Previous Day	% change from 01-Jan-25
S&P All Commodities	US\$	579.33	-0.42	5.40
S&P All Metals	US\$	319.05	1.00	3.80
Aluminum	US\$/metric ton	2,625.84	1.46	3.92
Copper	US\$/metric ton	9,123.09	0.77	5.44
Cotton	US cents/lb	64.23	-1.59	-2.53
Brent Crude Oil	US\$/barrel	82.11	-1.08	10.80
WTI Crude Oil	US\$/barrel	78.68	-1.70	9.70
Gold	US\$/troy oz	2,714.31	0.67	3.42
Palm Oil	US\$/metric tonne	1,015.66	-1.37	-7.68
Rice ¹	US\$/metric ton	486.00	0.00	-9.50
Rubber ²	US\$/kg	245.00	0.82	3.46
Sugar	US cents/lb	17.30	0.00	-4.95

¹ Latest closing price from 15 January 2025.
² Singapore Exchange, Ribbed Smoked Sheet Rubber.

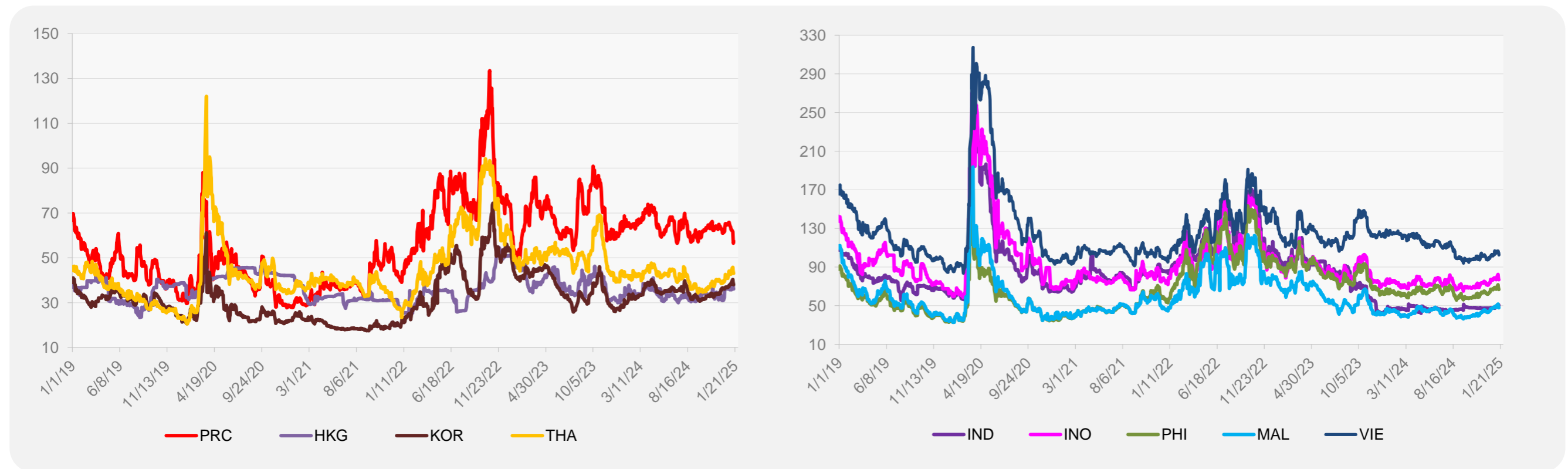


Source: ADB calculations using data from Bloomberg.

5-YEAR LOCAL CURRENCY GOVERNMENT BOND YIELDS (%)



5-YEAR CREDIT DEFAULT SWAP¹



¹ In USD and based on sovereign bonds.
Source: ADB calculations using data from Bloomberg.